

GE Healthcare

Simply capable

XR 6000 Radiography System



So reliable. So versatile. So much value.

At last it's here: A robust, reliable radiography system flexible enough for hundreds of exams from head to toe. With automated protocols that help you deliver consistent diagnostic-quality images. In a package that slips easily into a compact space – and won't stretch your budget.

Best of all, the XR 6000 radiography system delivers with the legendary quality you expect from GE Healthcare. This basic system comes backed by GE's legacy of imaging excellence, and with core technologies shared by our premium X-ray products. The XR 6000 lets you:

- Install quickly with minimal room refurbishing
- Easily position patients of almost any size
- Churn out exams hour after hour, day after day
- Get sound diagnoses at low dose exposure





Install confidence now. Prepare for your future.

Specifically designed for basic radiography, the XR 6000 delivers reliable service and extreme uptime. Extensive testing documents its robust performance in high-volume duty. It includes:

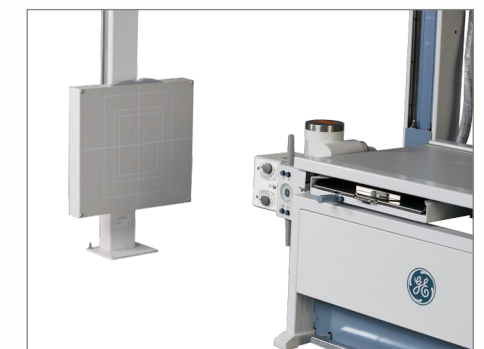
- X-ray tube built to endure more than 40,000 exposures
- Generator designed to perform despite intermittent power supply
- Easy access to the generator and power distribution unit for fast servicing

Up and running – overnight

At home in almost any environment, the XR 6000 fits in rooms as small as 4 x 5.5 m (13 x 18 ft – 4 x 5.5 m). With no wall or ceiling attachments, it installs in as little as one day – you save the time and cost of room reconstruction.

Your path forward

Does your future include digital radiography? Your XR 6000 system comes ready for upgrade to a GE digital solution.



Convenient exams. Automatic quality.

The XR 6000 is versatile and flexible to meet most clinical needs, with image quality your physicians can trust.

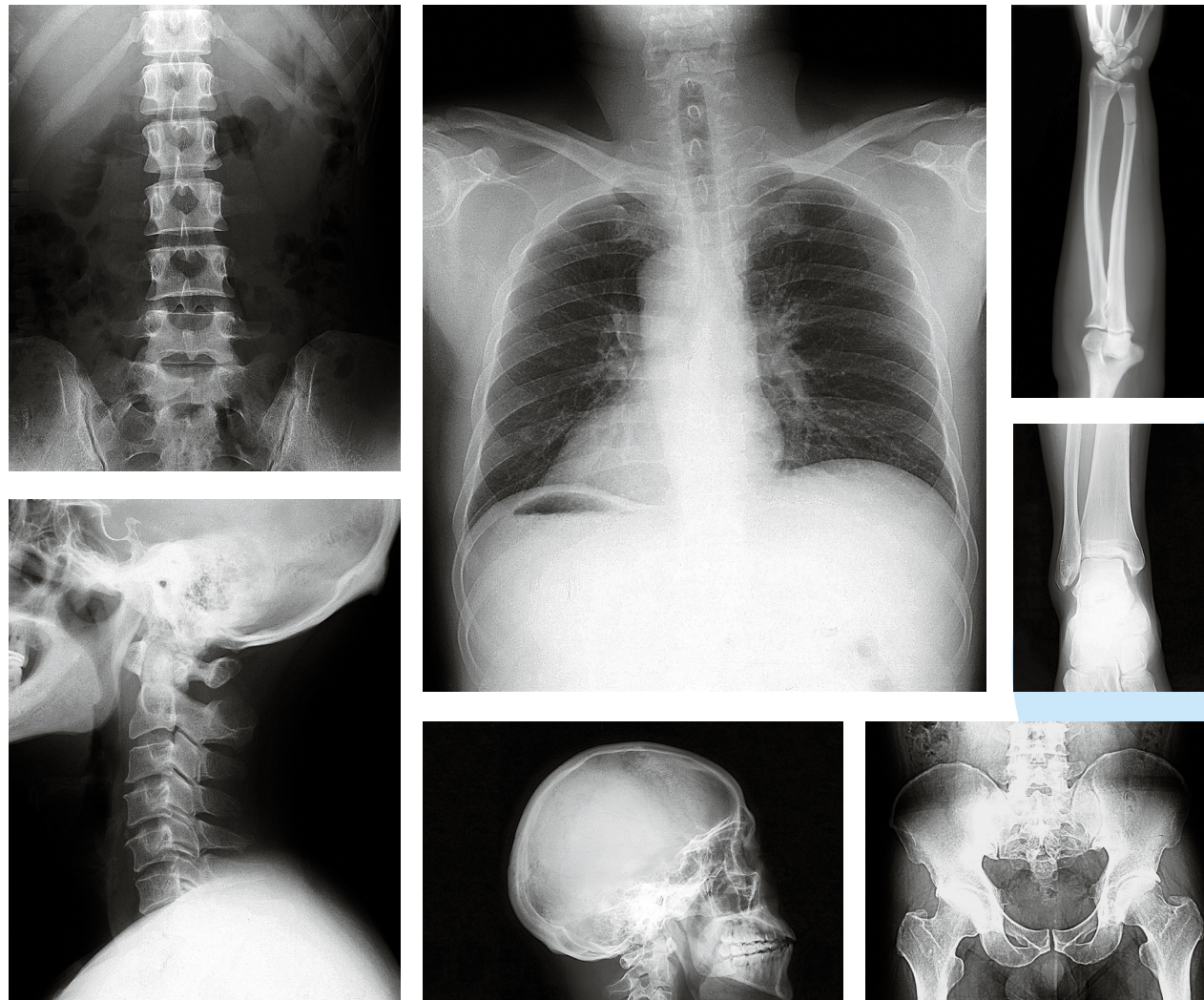
Image almost any patient – easily

Positioning for X-rays is easy for your staff and comfortable for your patients. The tube stand rotates 180 degrees, so you can image patients in wheelchairs or on trolleys without moving them to the table.

The tabletop floats eight ways, so you can set up quickly and accurately, without putting patients in stressful positions. Large patients are no problem: The table accommodates up to 220 kg (484 lb).

Pick your protocol

Exam setup is a breeze with Auto Protocol Recognition (APR). Head, chest, abdomen, extremities – up to 270 automated protocols integrated with the console cover most the anatomy. Pre-defined optimal exposure parameters help ensure diagnostic image quality at low dose – exam after exam.



Enjoy peace of mind.

Choose the XR 6000 and you work with a company admired worldwide for diagnostic imaging excellence. GE brings 125 years' experience in imaging and a global installed base of several thousand analog and digital radiography systems.

With the XR 6000, you benefit from GE technologies proven in multiple X-ray systems. It includes the same high-frequency generator technology platform as in our advanced products. This 50 kHz generator can deliver highly accurate and reliable KV, producing images that support reliable diagnosis.





GE Healthcare



@GEHealthcare



GE Healthcare



GE Healthcare

gehealthcare.com

GE Healthcare provides transformational medical technologies and services to meet the demand for increased access, enhanced quality and more affordable healthcare around the world. GE works on things that matter - great people and technologies taking on tough challenges. From medical imaging, software & IT, patient monitoring and diagnostics to drug discovery, biopharmaceutical manufacturing technologies and performance improvement solutions, GE Healthcare helps medical professionals deliver great healthcare to their patients.

GE Healthcare
Chalfont St.Giles,
Buckinghamshire,
UK

GE Healthcare, Europe
Headquarters Buc, France
+33 800 90 87 19

GE Healthcare, Middle East and Africa
Istanbul, Turkey
+ 90 212 36 62 900

GE Healthcare, North America
Milwaukee, USA
+ 1 866 281 7545

GE Healthcare, Latin America
Sao Paulo, Brazil
+ 55 800 122 345

GE Healthcare, Asia Pacific
Tokyo, Japan
+ 81 42 585 5111

GE Healthcare, ASEAN
Singapore
+65 6291 8528

GE Healthcare, China
Beijing, China
+ 86 800 810 8188

GE Healthcare, India
Bangalore, India
+91 800 209 9003

GE imagination at work

Data subject to change.

©2015 General Electric Company. HCSDBGSRADMC04151JB29592XX - All rights reserved.